

---

# **CLEMENTS**

---

proven through performance

## **MAK 300 Antibacterial Collection Jar**

SUC 89140 085

## **MAK 500 Standard Collection Jar**

SUC 89240 081



## **User Manual**

Manual No. SUC 89140 086  
Issue 4

---

## **Safety**

Thank you for purchasing this Clements MAK collection jar.

For your safety it is imperative that this unit only be operated by authorised personnel in accordance with the instructions as described in this manual. Operated in this way, the collection jar will provide the standard of service specified.

Due to continual improvements in product design, the collection jar may vary in detail from the descriptions in this manual. In the event of further questions please contact your local distributor or BMDi TUTA Healthcare direct.



FLOW METER S.p.A  
Via del Lino, 6  
24040 Levate, Bergamo, Italy

User Manual  
MAK Collection Jars  
Manual Number SUC 89140 086 Issue 4

Copyright © 2009 BMDi TUTA Healthcare Pty Ltd

The information in this manual was originated by, and is the exclusive property of BMDi TUTA Healthcare Pty Ltd. It is furnished for customer information only, and is not an authorisation or licence to make this product or to furnish this information to others.

**BMDi TUTA Healthcare Pty Ltd**  
**Unit 4B, 128-130 Frances St**  
**Lidcombe NSW 2141**  
**Australia**  
**Phone: +61 2 9466 5300**  
**Fax: +61 2 9922 7165**  
**[www.medaust.com](http://www.medaust.com)**

**Contents**

**Specifications ..... 4**

**Spares and Accessories Summary..... 5**

**Exploded Diagram - MAK 500 ..... 6**

**Exploded Diagram - MAK 300 ..... 7**

**Installation - Controller, Nozzle, Venturi ..... 8**

**Installation - Regulator ..... 10**

**Cleaning Agents..... 12**

**Warranty ..... 14**

## Specifications

Parameter	Description
Standard	AS 2120
Jar Material	Clear Polycarbonate
Capacity	MAK 300 300ml MAK 500 500ml
Lid	Polycarbonate with rubber seal, fittings chrome plated brass
Preparation prior to Autoclaving	<ul style="list-style-type: none"><li>• Separate the Jar, Lid, seals, Float Valve and Float Chamber assembly.</li><li>• Carefully clean all the surfaces using hot water not exceeding 60°C. Dry with a clean cloth.</li></ul>
Loading in Autoclave	<ul style="list-style-type: none"><li>• Place all part in autoclave and run sterilization cycle for 15 minutes at a maximum of 121°C, with the container placed upside-down.</li><li>• Cool the components to ambient temperature and reassemble.</li></ul>
Sterilising Agents	No known problems with conventional bacteriacides at recommended concentrations.
Cleaning	To avoid scratching the surface do not use abrasive cleaners. Refer to List.
Dimensions (MAK 300 Antibacterial)	210mm (H) x 98mm (W) x 70mm (D) Weight 210g
Dimensions (MAK 500 Standard)	245mm (H) x 98mm (W) x 70mm (D) Weight 240g

## **Spares and Accessories Summary**

### **MAK 500 Standard**

SUC 89240 081	MAK 500 Standard Collection Jar Complete
SUC 89240 084	MAK 500 Jar Only
SUC 89240 091	MAK Lid Service Kit

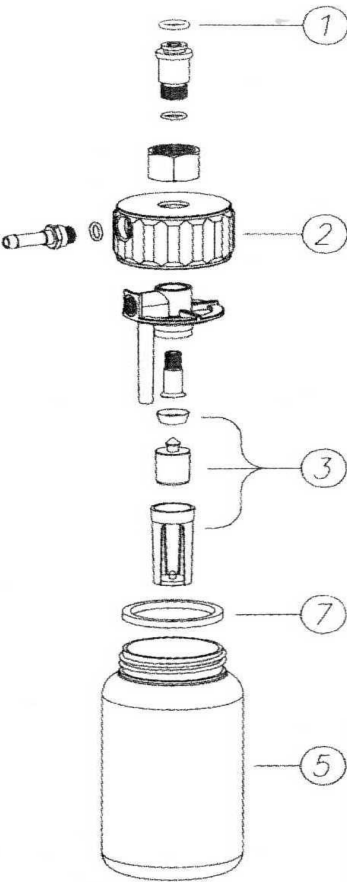
### **MAK 300 Antibacterial**

SUC 89140 085	MAK 300 Antibacterial Collection Jar Complete
SUC 89240 088	MAK 300 Jar Only
SUC 89240 090	Bacteria Filters (Pack of 20)
SUC 89240 091	MAK Lid Service Kit

### **Adaptors**

SUC 89240 080	Adaptor from Controller, Nozzle or Venturi to MAK Jar
SUC 89140 087	Adaptor from Regulator to MAK Jar

**MAK 500 Standard Collection Jar**



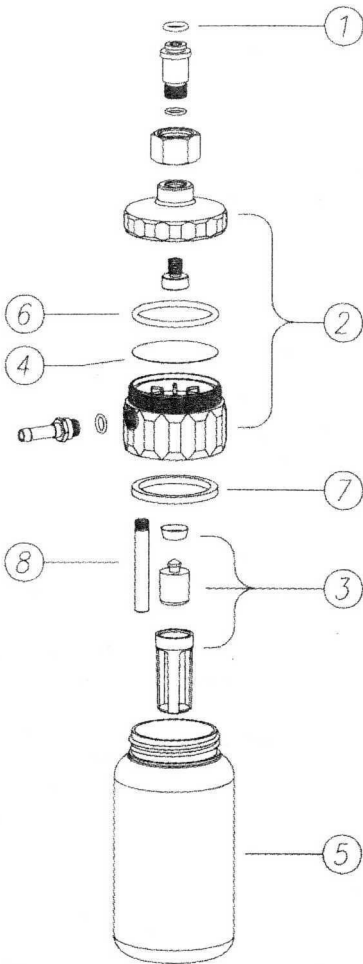
Item	Description
1	Supply Connector Gasket
2	Standard Lid Only
3	Overflow Valve Assembly
5	MAK 500 Jar Only
7	Lower Lid Gasket

**Spares**

Items	Catalogue	Description
1, 3, 6 and 7	SUC 89240 091	MAK Lid Service Kit Includes Connector, Upper & Lower Lid Gaskets and Overflow Valve
5	SUC 89240 084	MAK 500 Jar Only

Fig 1

**MAK 300 Antibacterial Collection Jar**



Item	Description
1	Supply Connector Gasket
2	Antibacterial Lid Only
3	Overflow Valve Assembly
4	Antibacterial Filter
5	MAK 300 Jar Only
6	Upper Gasket
7	Lower Lid Gasket
8	Float

**Spares**

Items	Catalogue	Description
1, 3, 6 and 7	SUC 89240 091	MAK Lid Service Kit Includes Connector, Upper & Lower Lid Gaskets and Overflow Valve
4	SUC 89240 090	Bacteria Filters (Pack of 20)
5	SUC 89240 088	MAK 300 Jar Only

Fig 2

## **Installation - Controller, Nozzle and Venturi**

For connection of either the MAK 300 Antibacterial or MAK 500 collection jar follow the procedure below:

1. Ensure you have the following items available:
  - a. Suction Device
  - b. MAK Jar complete with Lid Assembly
  - c. MAK Adaptor SUC 89240 080
2. Remove hose tail and porous bronze filter from device and store for later use.
3. Firmly attach adaptor by hand, inserting male thread with smaller diameter (See Fig 3) into the female threaded opening in the base of the device, turning clockwise. **Note: Use no tools**
4. In a clockwise direction, by hand, screw the hexagonal nut at the top of the lid assembly onto the male thread on the bottom of the adaptor. **Note: Use no tools**
5. Ensure that the overflow valve in the jar (See item 3. Fig 1 and 2) is securely installed and the float seal is facing upwards.
6. Attach patient side hose to the barb on the side of MAK jar lid.
7. Device is now ready for installation as per the device manual.

To install bacterial filter for **MAK 300 Antibacterial only** follow the procedure below:

1. Remove the clear lid at the top of the lid assembly.
2. Remove the O-ring.
3. Insert the filter into the top of the white lid.
4. Replace the O-ring and the clear lid.

**Note: Do not over tighten O-ring seal**



**Installation - Controller, Nozzle and Venturi**

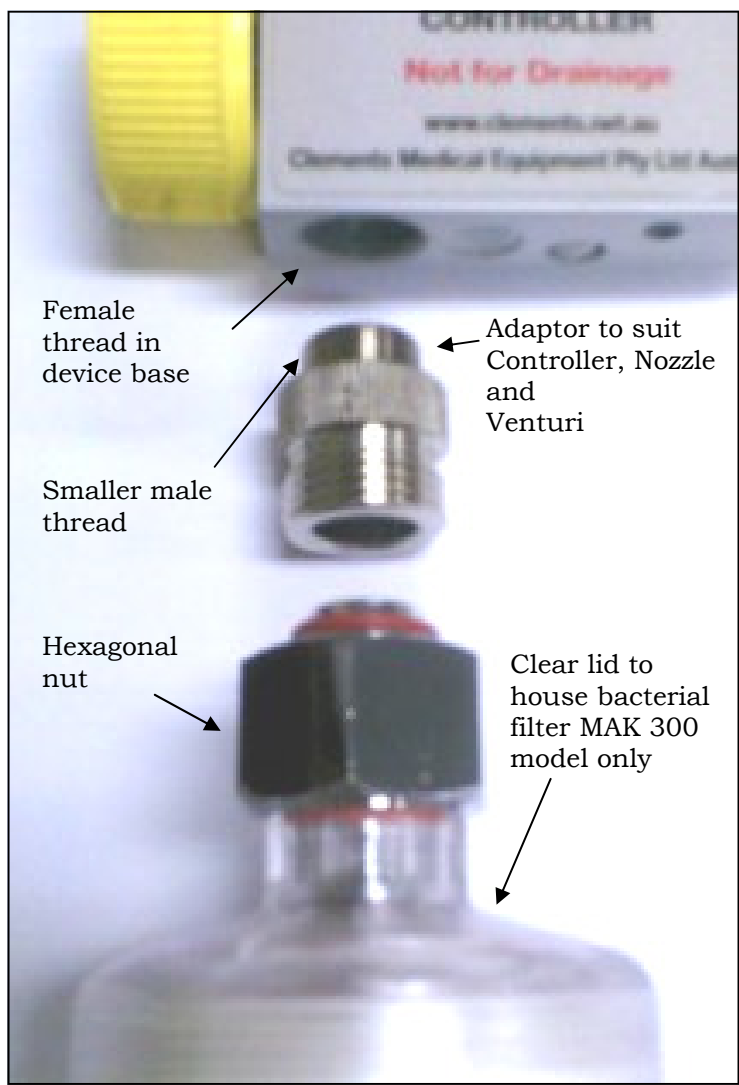


Fig 3

## Installation - Regulator

For connection of either the MAK 300 Antibacterial or MAK 500 collection jar follow the procedure below:

1. Ensure you have the following items available:
  - a. Suction Device
  - b. MAK Jar complete with Lid Assembly
  - c. MAK Adaptor SUC89140087
2. Remove safety jar and porous bronze filter from device and store for later use.
3. Firmly push adaptor by hand (See Fig 4) into the jar cap in the base of the device until the lip of the adaptor clears the O-ring seal.

***Note: Use no tools***

4. In a clockwise direction, by hand, screw the hexagonal nut at the top of the lid assembly onto the male thread on the bottom of the adaptor. ***Note: Use no tools***
5. Ensure that the overflow valve in the jar (See item 3. Fig 1 and 2) is securely installed and the float seal is facing upwards.
6. Attach patient side hose to the barb on the side of MAK jar lid.
7. Device is now ready for installation as per the device manual.

To install bacterial filter for **MAK 300 Antibacterial only** follow the procedure below:

1. Remove the clear lid at the top of the lid assembly.
2. Remove the O-ring.
3. Insert the filter into the top of the white lid.
4. Replace the O-ring and the clear lid.

***Note: Do not over tighten O-ring seal***

**Installation - Regulator**



Fig 4

**Cleaning Agents**

Recommendation	Agent
<b>Compatible Cleaning Agents</b>	<ul style="list-style-type: none"><li>• Ammonia solutions 30%</li><li>• Ammonium Chloride solutions</li><li>• Chloramine</li><li>• Cyclohexane</li><li>• Methylated Spirits (Ethanol)</li></ul>
<b>Cleaning Agents Only To Be Used Sparingly</b>	<ul style="list-style-type: none"><li>• Acetic Acid 70%</li><li>• Ethyl Alcohol 96%</li><li>• Nitric Acid solutions 10%</li><li>• Petrol</li><li>• Sulphuric Acid solutions 30%</li></ul>
<b>Cleaning Agents NOT TO BE USED</b>	<ul style="list-style-type: none"><li>• Acetone</li><li>• Acide phenique</li><li>• Benzene</li><li>• Bio-Vac</li><li>• Cyclohexanone</li><li>• Cyclohexene</li><li>• Dettol</li><li>• Diethylether</li><li>• Ether</li><li>• Hexane</li><li>• Iodine solutions</li><li>• Isopropyl Alcohol</li><li>• Methanol</li><li>• Phenol solutions</li><li>• Potassium Hydroxide solutions</li><li>• Pyridine</li><li>• Sodium Hydroxide solutions</li><li>• Tetrahydrofurane</li><li>• Tincture of Iodine</li><li>• Toluene</li><li>• Xylene</li></ul>

## **Notes**

## Warranty

BMDi TUTA Healthcare Pty Limited warrants that this product is free from defects in workmanship and materials for a period of 12 months (3 months for batteries) from the date of shipment by BMDi TUTA Healthcare or its authorised agent to the purchaser. Subject to the conditions of this warranty, if the product fails to operate for any reason within the warranty period and the product is returned to the place of purchase at the purchaser's expense, BMDi TUTA Healthcare will repair or replace the product free of charge.

If a valid warranty claim is made within 30 days from the date of shipment, then BMDi TUTA Healthcare will also reimburse the purchaser for reasonable freight costs in returning the product to the place of purchase.

## Conditions of Warranty

1. The product must be returned to the place of purchase with proof of purchase.
2. This warranty is only available to the original purchaser of the product.
3. The product must not have had its serial number removed, defaced or changed, its casing opened, its power supply altered or have been tampered with in any other way.
4. This warranty does not cover :
  - inadequate or incorrect site preparation;
  - improper installation;
  - connection to the wrong voltage;
  - failure of the product due to misuse;
  - the use or operation of the product outside of the physical, electrical or environmental specifications of the product;
  - use in a manner or environment in which the product is not designed to be used;
  - improper adjustment, calibration or operation by the purchaser;
  - the use of accessories including consumables, hardware or software which were not manufactured or approved in writing by BMDi TUTA Healthcare ;
  - any modifications of the product which were not authorised in writing by BMDi TUTA Healthcare ;
  - any contamination or leakages caused or induced by the purchaser; and
  - inadequate or improper maintenance of the product.
5. This warranty does not cover normal wear and tear.
6. BMDi TUTA Healthcare will not be responsible for damage or loss caused during shipping.

7. In Australia, apart from any warranties implied by the Trade Practices Act 1974 all other warranties expressed or implied and whether arising by virtue of statute or otherwise are hereby excluded.
8. Outside Australia, all other warranties expressed or implied and whether arising by virtue of statute or otherwise (including any warranties implied by the Vienna Convention) are hereby excluded.
9. BMDi TUTA Healthcare's obligations under this warranty are limited to the repair or replacement of the product, within the terms of this warranty and the total liability of BMDi TUTA Healthcare for loss or damage of every kind whether arising pursuant to the terms of the sale of the product or otherwise in connection with the product is limited to the amount paid by the purchaser to BMDi TUTA Healthcare for the product.
10. Apart from any liability imposed by Part VA of the Trade Practices Act, BMDi TUTA Healthcare accepts no other liability for any loss or damage occasioned (including consequential loss or damages) in any way as a result of the use of the product.
11. The warranty does not extend to cover damage to the following parts as they are inherently prone to wear :
  - motor brushes
12. This warranty does not extend to cover corrosion due to any cause nor to any damage to painted or anodised surfaces.

BMDi TUTA Healthcare will give the purchaser the benefit of any manufacturer's warranty in respect of any components in the product which were not manufactured by BMDi TUTA Healthcare , if such a manufacturer's warranty is available

